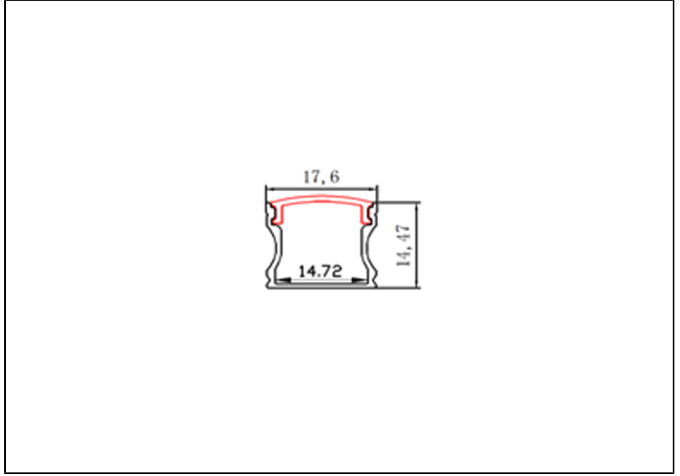
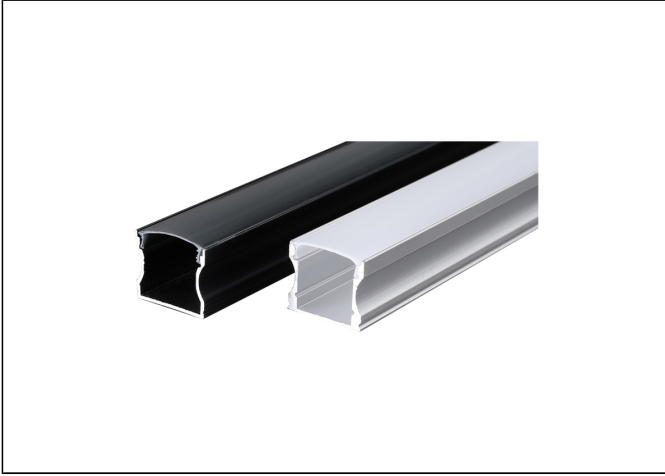




PR-LL-ROW0-03-040548



Offices & Healthcare - Linear Light



Description

الوصف

Aluminum profile used for cove lighting-There are various sections of different sizes with controllable lengths. Used in the hidden lighting of walls and ceilings and within the furnishings are found in straight forms and in the form of angles with the possibility of controlling the shape of the section and sizes to suit the proposed design and the size of the light source installed inside

فريم من الألمنيوم يستخدم في الإنارة المخفية يوجد منه مقاطع متنوعة بأحجام مختلفة مع قابلية التحكم بأطواله يستخدم في الإنارة المخفية للجدران و الأسقف و ضمن المفروشات يتواجد بأشكال مستقيمة و على شكل زوايا مع إمكانية التحكم بشكل المقطع و مقاساته بما يتناسب مع التصميم المقترح و حجم مصدر الإنارة المثبت داخله

Product Specification

Electrical features


Luminaire luminous flux	-
Efficiency	-
CCT	-
CRI	-
Beam Angle	-
Working temperature	-
Life span	-
IP	20
Dimension	W17.6 x L1000 x H14.47

-	Light source
-	-
-	Powered By

Applications

Healthcare, Offices, Hospitals & Clinics, Showrooms

Technical features

Materials	
Housing-Silver -Aluminum	
Installation way	
Surface	
Recessed	
Adjustability	
Not Adjustable	

visit product on website



Accessories



PR-0937

Mounting clips 2 pcs



PR-0941

Endcap Closed and Open